



OPERATING INSTRUCTIONS & SERVICE MANUAL

Steammaster

CLEANER. BETTER. SMARTER.



Steammaster

CLEANER. BETTER. SMARTER.



HOUR METER

An hour meter is fitted to your portable to enable an accurate check on the operating hours of the vacuum motors and the pump.

SWITCHES

The illuminated heavy duty rocker switches are placed at the side of the machine away from any possible water contact. If the heater switch is activated all other switches (pump, vac's & waste) will not operate. To operate in normal running mode the heater switch must be in the off position. The portable is fitted with a heater switch, a pump switch, two vac motor switches and a reset button. Fully automatic machines may be fitted with a waste pump, therefore having a waste switch.



PRESSURE GAUGE

The portable is fitted with a heavy duty glycerine filled pressure gauge which is dampened to prevent vibration is fitted in the pump line and registers the amount of pressure in the line.

PRESSURE REGULATOR (UNLOADER VALVE)

The pressure regulator is situated on the front of the machine and enables easy adjustment of the working pressure (PSI) of the machine. This makes it very easy to back off pressure for things like upholstery cleaning.



DUMP VALVE (WASTE RELEASE)

The portable is fitted with a dump valve to make it easy to empty the waste in the dirty water tank. Make sure that the valve is closed before you start to work because you will have no vacuum pressure while it is open.

Steamaster

CLEANER. BETTER. SMARTER.



1 - LOW WATER SHUT OFF FOR PUMP

All portables are fitted with a float switch which is in place to sense when the water level in the solution tank drops to low, so the pump can never run dry.

2 - HEATER (5 AMP)

All portables are fitted with a 5 amp heater to sustain water temperature while you are not working.



BOOSTER PORT

All portable units are fitted with a booster port. This port enables the use of a "Turbo Booster". The Booster is fitted with two additional two stage vacuum motors which doubles the suction power of your portable machine. For more info on the Booster see "Accessories".



AUTO FILL (AUTOMATIC'S ONLY)

The automatic portables are fitted with an auto fill feature, this means you can have your portable connected to the water source of the property you are working from and it will automatically fill the solution tank while you are working away and keep the water level at a high volume. This means no time lost to keep filling the solution tank.



WASTE PUMP VALVE (AUTOMATIC'S ONLY)

The automatic portables are fitted with a waste pump. To activate the pump turn the waste switch to the on position and open the ball valve at the front of the machine. (you should have a waste hose to screw onto the valve) When the waste reaches a set level the waste pump will automatically switch on and start pumping the waste away.

CLEANING YOUR FILTERS



FILTER BAG (WASTE TANK)

All portable units come with a filter bag which is in place to catch all the larger pieces of dirt that are sucked up into the waste tank. This means that you will not have to filter your waste water when dumping because it is already done. After every days work you should empty the lint bag into a bin and rinse it out, if you want to keep it white you may bleach it.



RECOVERY FILTER

All portable units are fitted with a recovery filter which is designed to shut off the vacuum motors when the waste water gets to high in the tank. This filter must be cleaned on a regular basis to ensure no build up of dirt, otherwise the shut off will not engage and you will drown your vac motors.



PUMP FILTER (SOLUTION TANK)

All portable units are fitted with a small button filter in the clean water or solution tank (arrowed) this filter is in place to stop any small particles being drawn into the pump and damaging it. This filter must be unscrewed and rinsed on a regular basis to ensure no build up of dirt on it, and to ensure the life of the pump.



WASTE PUMP (AUTOMATIC'S ONLY)

If you have a fully automatic machine with a waste pump, you will have to clean the pump on a regular basis to ensure that no build up dirt forms around the part of the pump that draws water in. In order to take the pump out you need to un-hook it from the base plate, which is held in with an o-ring. You will then be able to remove the pump for cleaning. To put the pump back in you need to seat it back into the base plate and lock it in with the o-ring again.

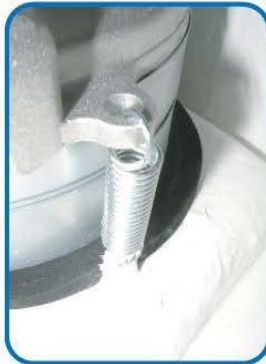
PROPER MAINTENANCE ON YOUR FILTERS WILL ENSURE THE LIFE OF YOUR MACHINE

SERVICING YOUR VACUUM MOTORS

Your portable is fitted with two 1100 watt two stage vacuum motors, you should get at least 600 hours out of a motor, however there have been cases where a motor has lasted up to 1000 hours. It is recommended to check the length of the brushes in the motor and replace them at around 300 hours. **BEFORE SERVICING ENSURE THAT THE MACHINE IS NOT PLUGGED INTO POWER!**

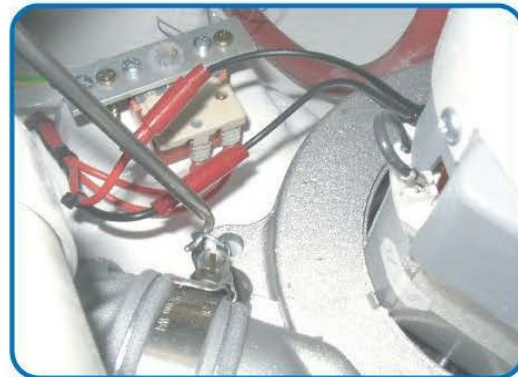


The vacuum motors are wired to two separate switches number one is wired to a loom and number two is wired directly to the number two switch. Below are four steps for easy vac motor replacement. Make sure if you replace a vac motor to remember to put back the piece of PVC around the vac motor's head. This is very important to have because it protects wiring in case any water ever passes through a vac motor.



STEP 1

You will first have to take off the three springs holding the vac motor on. To do this use a hook or a screwdriver and simply lever the spring out of the catch or hole on the motor



STEP 2

Once you have taken all 3 springs off you can then disconnect the wiring, if it is vac 1 it will be wired by these bullet joiners, if it is vac two it will be wired to the switch itself.



STEP 3

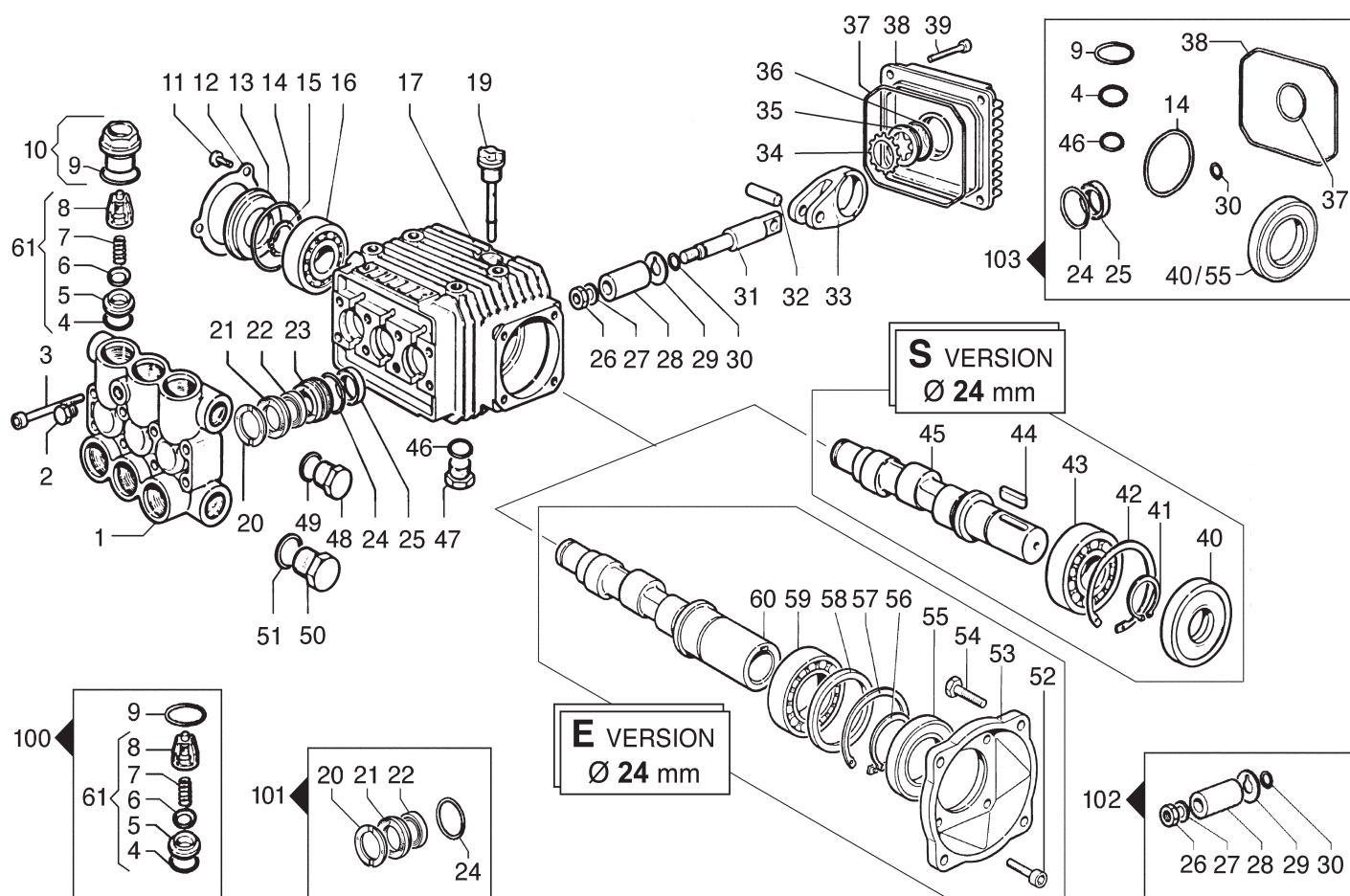
Now you can take off the exhaust hose from the motor, do this by simply unscrewing the hose clamp.



STEP 4

Now disconnect the earth lug from the vac motor.

Now that you have disconnected the 3 springs, the wiring, the hose clamp, and the earth lug you can remove the vacuum motor and replace it with a new one. To refit a vacuum motor simply reverse the four steps above. When replacing a vacuum motor make sure you reposition it evenly on the black foam so as to get correct suction from the unit.



| N° | Cod. | Descrizione | Description | Note | Qty | Model |
|----|-----------|-------------------------|-------------------------|------------|-----|---|
| 1 | 3218 0105 | Testata Pompa Alluminio | Allum. Pump Manifold | Ø18 | 1 | 3513 E Allum. |
| | 3218 0318 | Testata Pompa Ottone | Brass Pump Manifold | Ø18 | 1 | 3513 E Brass 2520 S - 3525 S 3016 S - 3020 S 3025 S - 3513 S 3517 S |
| | 3218 0317 | Testata Pompa Ottone | Brass Pump Manifold | Ø15 | 1 | 2020 S |
| 2 | 3202 0018 | Tappo | Cap | G1/8 | 1 | |
| 3 | 3609 0108 | Vite | Screw | M6x55 | 8 | |
| 4 | 1210 0046 | Guarnizione OR | O-Ring | 2,62x17,13 | 6 | |
| 5 | 3009 0087 | Sede Valv. Aspir./Mand. | Suct./Del. Valve Seat | | 6 | |
| 6 | 3604 0017 | Valvola Aspir./Mand. | Suct./Del. Valve | | 6 | |
| 7 | 1802 0177 | Molla Valv. Asp./Mand. | Suct./Del. Valve Spring | | 6 | |
| 8 | 1205 0025 | Gabbia Valv. Asp./Mand. | Suct./Del. Valve Cage | | 6 | |
| 9 | 1210 0048 | Guarnizione OR | O-Ring | 2,62x20,24 | 6 | |
| 10 | 3202 0312 | Tappo + OR | Cap + O-Ring | | 6 | |
| 11 | 3609 0088 | Vite | Screw | M5x10 | 3 | |
| 12 | 1004 0012 | Flangia Tenuta | Crankcase Flange | | 1 | |
| 13 | 0402 0172 | Coperchio | Cover | | 1 | |
| 14 | 1210 0386 | Guarnizione OR | O-Ring | 3,53x44,04 | 1 | |
| 15 | 3019 0011 | Seeger Esterno | Outer Seeger | | 1 | |
| 16 | 0438 0066 | Cuscinetto a Sfere | Ball Bearing | 20x52x15 | 1 | 2020 S - 2520 S 3016 S - 3020 S 3513 S - 3513 E 3517 S |
| | 0438 0069 | Cuscinetto a Sfere | Ball Bearing | 20x52x15 | 1 | 3025 S - 3525 S |
| 17 | 0403 0128 | Carter Pompa | Pump Crankcase | | 1 | |
| 19 | 3200 0051 | Asta Livello Olio | Oil Dipstick | | 1 | |
| 20 | 0009 0196 | Anello Pressione | Packing Head Ring | Ø15 | 3 | 2020 S |
| | 0009 0193 | Anello Pressione | Packing Head Ring | Ø18 | 3 | 2520 S - 3016 S 3020 S - 3025 S 3513 S - 3513 E 3517 S - 3525 S |

| N° | Cod. | Descrizione | Description | Note | Qty | Model |
|----|-----------|----------------------|-------------------|------------|-----|--|
| 21 | 1241 0065 | Guarnizione Tenuta | Packing | Ø15 | 3 | 2020 S |
| | 1241 0035 | Guarnizione Tenuta | Packing | Ø18 | 3 | 2520 S - 3016 S 3020 S - 3025 S 3513 S - 3513 E 3517 S - 3525 S |
| 22 | 1241 0030 | Guarnizione Tenuta | Packing | Ø15 | 3 | 2020 S |
| | 1241 0028 | Guarnizione Tenuta | Packing | Ø18 | 3 | 2520 S - 3016 S 3020 S - 3025 S 3513 S - 3513 E 3517 S - 3525 S |
| 23 | 0009 0198 | Anello Portaguarniz. | Packing Retainer | Ø15 | 3 | 2020 S |
| | 0009 0197 | Anello Portaguarniz. | Packing Retainer | Ø18 | 3 | 2520 S - 3016 S 3020 S - 3025 S 3513 S - 3513 E 3517 S - 3525 S |
| 24 | 1210 0223 | Guarnizione OR | O-Ring | 1,78x26,7 | 3 | |
| 25 | 0019 0095 | Anello Tenuta | Oil Seal | 15x24x5 | 3 | |
| 26 | 0600 0048 | Dado Speciale | Special Bolt | | 3 | |
| 27 | 2811 0080 | Rondella | Washer | 8,2x14x1,5 | 3 | |
| 28 | 0202 0020 | Bussola Ceramica | Ceramic Bushing | Ø15 | 3 | 2020 S |
| | 0202 0018 | Bussola Ceramica | Ceramic Bushing | Ø18 | 3 | 2520 S - 3016 S 3020 S - 3025 S 3513 S - 3513 E 3517 S - 3525 S |
| 29 | 2812 0038 | Rondella | Washer | | 3 | |
| 30 | 1210 0055 | Guarnizione OR | O-Ring | 1,78x6,07 | 3 | |
| 31 | 2409 0044 | Pistone Guida | Piston Guides | | 3 | |
| 32 | 3011 0014 | Spinotto | Gudgeon Pin | | 3 | |
| 33 | 0205 0048 | Kit Biella | Con. Rod Assembly | | 3 | 2020 S - 3513 S 3513 E |
| | 0205 0050 | Kit Biella | Con. Rod Assembly | | 3 | 2520 S - 3016 S 3020 S - 3025 S 3517 S - 3525 S |
| 34 | 3019 0033 | Seeger Esterno | Outer Seeger | Ø28 | 1 | |
| 35 | 3201 0026 | Spia Livello Olio | Oil Indicator | | 1 | |

| N° | Cod. | Descrizione | Description | Note | Qty | Model |
|----|-----------|----------------------|-----------------|-------------|-----|---|
| 36 | 1210 0333 | Guarnizione OR | O-Ring | 1,78x23,52 | 1 | |
| 37 | 1210 0621 | Guarnizione OR | O-Ring | 3,0x94 | 1 | |
| 38 | 0402 0142 | Coperchio Carter | Crankcase Cover | | 1 | |
| 39 | 3609 0041 | Vite | Screw | M6x25 | 4 | |
| 40 | 0019 0094 | Anello Tenuta | Oil Seal | 25x62x10/7 | 1 | |
| 41 | 3019 0006 | Seeger Esterno | Outer Seeger | | 1 | |
| 42 | 3020 0012 | Seeger Interno | Inner Seeger | | 1 | |
| 43 | 0438 0075 | Cuscinetto a Sfere | Ball Bearing | 25x62x17 | 1 | 2020 S - 2520 S 3016 S - 3020 S 3513 S - 3517 S |
| | 0438 0071 | Cuscinetto a Sfere | Ball Bearing | 25x62x17 | 1 | 3025 S - 3525 S |
| 44 | 1602 0045 | Linguetta | Key | 8x7x25 | 1 | |
| 45 | 0001 0290 | Albero Passante | Throughshaft | Ø24 | 1 | 2020 S - 3016 S 3020 S - 3025 S |
| | 0001 0294 | Albero Passante | Throughshaft | Ø24 | 1 | 3513 S - 3517 S 3525 S |
| | 0001 0333 | Albero Passante | Throughshaft | Ø24 | 1 | 2520 S |
| 46 | 1210 0441 | Guarnizione OR | O-Ring | 2x14 | 1 | |
| 47 | 3200 0007 | Tappo | Plug | 3/8 GAS | 1 | |
| 48 | 3200 0007 | Tappo | Plug | 3/8 GAS | 1 | |
| 49 | 2811 0084 | Rondella | Washer | 16,7x22x1,5 | 1 | |
| 50 | 3202 0015 | Tappo | Plug | G1/2 | 1 | |
| 51 | 2811 0086 | Rondella | Washer | 21,2x27x1,5 | 1 | |
| 52 | 3609 0032 | Vite | Screw | M6x20 | 4 | |
| 53 | 3016 0014 | Flangia | Flange | MEC 90 | 1 | |
| 54 | 3607 0015 | Vite Testa Esagonale | Hexagonal Screw | M8x20 | 4 | |
| 55 | 0019 0075 | Anello Tenuta Olio | Oil Seal | 35x62x7 | 1 | |
| 56 | 3019 0004 | Seeger Esterno | Outer Seeger | Ø35 | 1 | |

| N° | Cod. | Descrizione | Description | Note | Qty | Model |
|----|-----------|-------------------------|----------------------------|----------|-----|--------|
| 57 | 3020 0012 | Seeger Interno | Inner Seeger | Ø62 | 1 | |
| 58 | 2812 0064 | Rondella Distanziale | Spacer | | 1 | |
| 59 | 0438 0015 | Cuscinetto a Sfere | Ball Bearing | 35x62x14 | 1 | |
| 60 | 0001 0343 | Albero Femmina | Hollow Shaft | Ø24 | 1 | 3513 E |
| 61 | 1220 0030 | Gruppo Valv. Asp./Mand. | Suct./Del. Valve Ass.y kit | | 6 | |

Kit Ricambi

Spare Parts Kit

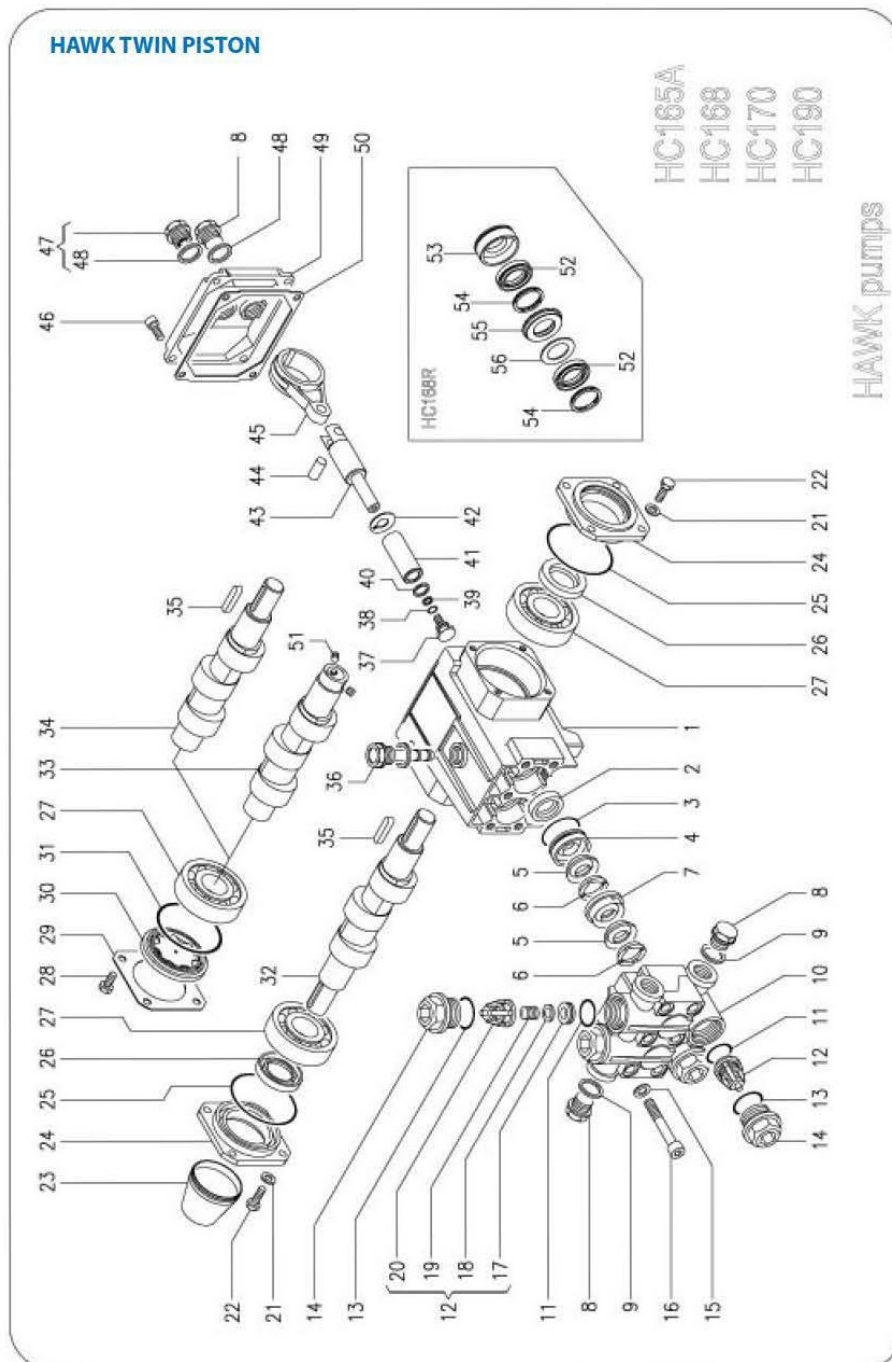
| | | | | | | |
|-----|-----------|-----------------------|----------------|----------------|---|--|
| 100 | 5025 0011 | Kit Valvole | Valve Kit | | 1 | |
| 101 | 5019 0035 | Kit Guarnizioni Acqua | Water Seal Kit | Ø15 | 1 | 2020 S |
| | 5019 0037 | Kit Guarnizioni Acqua | Water Seal Kit | Ø18 | 1 | 2520 S - 3016 S 3020 S - 3025 S 3513 S - 3513 E 3517 S - 3525 S |
| 102 | 2409 0071 | Kit Pistone | Piston kit | Ø15 | 1 | 2020 S |
| | 2409 0072 | Kit Pistone | Piston kit | Ø18 | 1 | 2520 S - 3016 S 3020 S - 3025 S 3513 S - 3513 E 3517 S - 3525 S |
| 103 | 5019 0040 | Kit Guarnizioni Olio | Oil Seal Kit | Male/Solid | 1 | 2520 S - 3016 S 3020 S - 3025 S 3513 S - 3517 S 2020 S - 3525 S |
| | 5019 0041 | Kit Guarnizioni Olio | Oil Seal Kit | Femmina/Hollow | 1 | 3513 E |

SERVICING YOUR PUMP

Your portable is fitted with one of three pumps, a twin piston HAWK pump, a triple piston BERTOLINI pump or a triple piston HAWK pump. The first service or oil change should occur after the first 50 hours of operation and then every 300 hours after that. You should replace oil, not just top it up.

You should use HELIX SUPER 20W-40 (SL/CF) OIL or equivalent when doing your oil change.

You can keep an eye on the oil level using the sight glass, oil level should sit on the middle of the sight glass. If you ever have to replace oil or water seals in the pump the break down is below.




SERVICING YOUR PUMP CONT.

| Pos. I tem | Codice Part Number | Description | Descrizione | Q. tà/Pompa Q. ty/Pump | HC165ARL | HC168R | HC170 | HC170RL | HC190 | HC190RL |
|---------------|-----------------------|----------------------|-------------------------|---------------------------|----------|--------|-------|---------|-------|---------|
| 1 | 0202.04 | Crankcase | Carter | 1 | | | | | | |
| *2 | 0001.01 | Plunger oil seal | Anello radiale | 2 | ♦ | ♦ | ♦ | ♦ | ♦ | ♦ |
| *3 | 0601.07 | "O" Ring Ø1.78x31.47 | "O" Ring Ø1.78x31.47 | 2 | | | | | | |
| *4 | 1201.04 | Pressure ring 20mm | Pressore Ø20 | 2 | ♦ | | ♦ | ♦ | ♦ | ♦ |
| *5 | 0002.05 | "V" seal, dia.20mm | Anello tenuta "V" Ø20 | 4 | ♦ | | ♦ | ♦ | ♦ | ♦ |
| *6 | 0300.09 | Support ring 20mm | Diffusore Ø20 | 4 | ♦ | | ♦ | ♦ | ♦ | ♦ |
| *7 | 0300.19 | Intermed. ring 20mm | Diffusore Intermed. Ø20 | 2 | ♦ | | ♦ | ♦ | ♦ | ♦ |
| 8 | 1601.17 | Brass plug G3/8 | Tappo G3/8 | 3 | | | | | | |
| 9 | 0603.06 | Copper washer 3/8 | Guarnizione rame G3/8 | 2 | | | | | | |
| 10 | 1602.12 | Manifold housing | Testata | 1 | | | | | | |
| *11 | 0601.06 | "O" Ring Ø2.62x18.72 | "O" Ring Ø2.62x18.72 | 4 | | | | | | |
| *12 | 3604.10 | Valve assembly | Valvola premontata | 4 | | | | | | |
| *13 | 0601.05 | "O" Ring Ø2.62x23.47 | "O" Ring Ø2.62x23.47 | 4 | | | | | | |
| 14 | 1601.07 | Valve plug | Tappo valvola | 4 | ♦ | ♦ | ♦ | ♦ | ♦ | ♦ |
| 15 | 1400.01 | Washer | Rosetta Ø8.5 | 6 | | | | | | |
| 16 | 1801.18 | Manifold stud bolt | Vite M8x60 | 6 | | | | | | |
| 17 | 1503.00 | Valve seat | Sede valvola | 4 | | | | | | |
| 18 | 1202.00 | Valve plate | Piattello valvola | 4 | | | | | | |
| 19 | 0900.04 | Valve spring | Molla valvola | 4 | | | | | | |
| 20 | 0604.00 | Valve cage | Gabbia valvola | 4 | | | | | | |
| 21 | 1400.02 | Washer | Rosetta Ø6.5 | → | 4 | 4 | 8 | 4 | 8 | 4 |
| 22 | 1802.07 | Hexagonal screw | Vite M6x18 | → | 4 | 4 | 8 | 4 | 8 | 4 |
| 23 | 0205.01 | Shaft protector | Protezione albero | 1 | | | ♦ | | ♦ | |
| 24 | 0500.09 | Open flange | Flangia cuscinetto | → | 1 | 1 | 2 | 1 | 2 | 1 |
| 25 | 0601.09 | "O" Ring Ø2.62x61.6 | "O" Ring Ø2.62x61.6 | → | 1 | 1 | 2 | 1 | 2 | 1 |
| 26 | 0001.06 | Shat oil seal | Anello radiale | → | 1 | 1 | 2 | 1 | 2 | 1 |
| 27 | 0213.00 | Ball bearing | Cuscinetto a sfere | 2 | ♦ | ♦ | ♦ | ♦ | ♦ | ♦ |
| 28 | 1802.13 | Hexagonal screw | Vite M6x18 | 4 | | | | | | |
| 29 | 0203.18 | Bearing cover | Coprichio cuscinetto | 1 | ♦ | ♦ | | ♦ | | ♦ |
| 30 | 0700.03 | Sight glass | Spia livello olio | 1 | | | | | | |
| 31 | 0601.83 | "O" Ring Ø3.53x55.56 | "O" Ring Ø3.53x55.56 | 1 | | | | | | |
| 32 | 0004.24 | Crankshaft | Albero eccentrico | 1 | | | ♦ | | | |
| | 0004.26 | Crankshaft | Albero eccentrico | 1 | | | | | ♦ | |
| 33 | 0004.52 | Crankshaft | Albero eccentrico | 1 | ♦ | ♦ | | | | |
| 34 | 0004.32 | Crankshaft | Albero eccentrico | 1 | | | | ♦ | | |
| | 0004.51 | Crankshaft | Albero eccentrico | | | | | | | ♦ |
| 35 | 0206.03 | Crankshaft key | Chiavetta | 1 | | | | | | |
| 36 | 1600.03 | Oil dip stick | Tappo livello olio | 1 | | | | | | |
| *37 | 1800.01 | Plunger bolt | Vite pistone | 2 | | | | | | |
| *38 | 0601.03 | "O" Ring Ø1.78x7.66 | "O" Ring Ø1.78x7.66 | 2 | | | | | | |
| *39 | 0009.04 | Teflon ring | Anello antiestrusione | 2 | | | | | | |
| *40 | 1400.12 | Copper spacer | Rosetta rame | 2 | ♦ | ♦ | ♦ | ♦ | ♦ | ♦ |
| *41 | 1200.16 | Plunger 20mm | Pistone Ø20 | 2 | | | | | | |
| *42 | 1400.15 | Copper spacer | Rosetta rame | 2 | | | | | | |
| 43 | 0003.12 | Plunger rod | Asta pistone | 2 | | | | | | |
| 44 | 1502.02 | Connecting rod pin | Spinotto | 2 | | | | | | |
| 45 | 0100.02 | Connecting rod | Biella | 2 | | | | | | |
| 46 | 1801.12 | Cover screw | Vite M6x16 | 4 | | | | | | |
| 47 | 0700.01 | Sight glass | Spia livello olio | 1 | | | ♦ | | ♦ | |
| 48 | 0603.02 | Gasket, G3/8 | Guarnizione G3/8 | 1 | ♦ | ♦ | ♦ | ♦ | ♦ | ♦ |

SERVICING YOUR PUMP CONT.

| Pos. Item | Codice Part Number | Description | Descrizione | Q.tà/Pompa Q.ty/Pump | HC165ARL | HC168R | HC170 | HC170RL | HC190 | HC190RL |
|-----------|--------------------|---------------------|-------------------------|-------------------------|----------|--------|-------|---------|-------|---------|
| 49 | 0203.06 | Crankcase cover | Coperchio | 1 | | | ♦ | | ♦ | |
| | 0203.24 | Crankcase cover | Coperchio | 1 | ♦ | ♦ | | ♦ | | ♦ |
| 50 | 0600.06 | Cover gasket | Guarnizione coperchio | 1 | ♦ | ♦ | ♦ | ♦ | ♦ | ♦ |
| 51 | 1803.02 | Set screw | Vite STEI M6x6 | 2 | ♦ | ♦ | | | | |
| *52 | 0002.32 | "U" seal, dia.20mm | Anello tenuta "U" Ø20 | 4 | | ♦ | | | | |
| *53 | 1201.23 | Pressure ring 20mm | Pressore Ø20 | 2 | | ♦ | | | | |
| *54 | 0300.36 | Support ring 20mm | Diffusore Ø20 | 4 | | ♦ | | | | |
| *55 | 0300.30 | Intermed. ring 20mm | Diffusore Intermed. Ø20 | 2 | | ♦ | | | | |
| *56 | 0009.23 | Teflon ring | Anello antiestrusione | 2 | | ♦ | | | | |

  Part available
in kit only

  Part available
in kit also

*Particolare disponibile
solo in kit*

*Particolare disponibile
anche in kit*

SPARE PARTS KIT

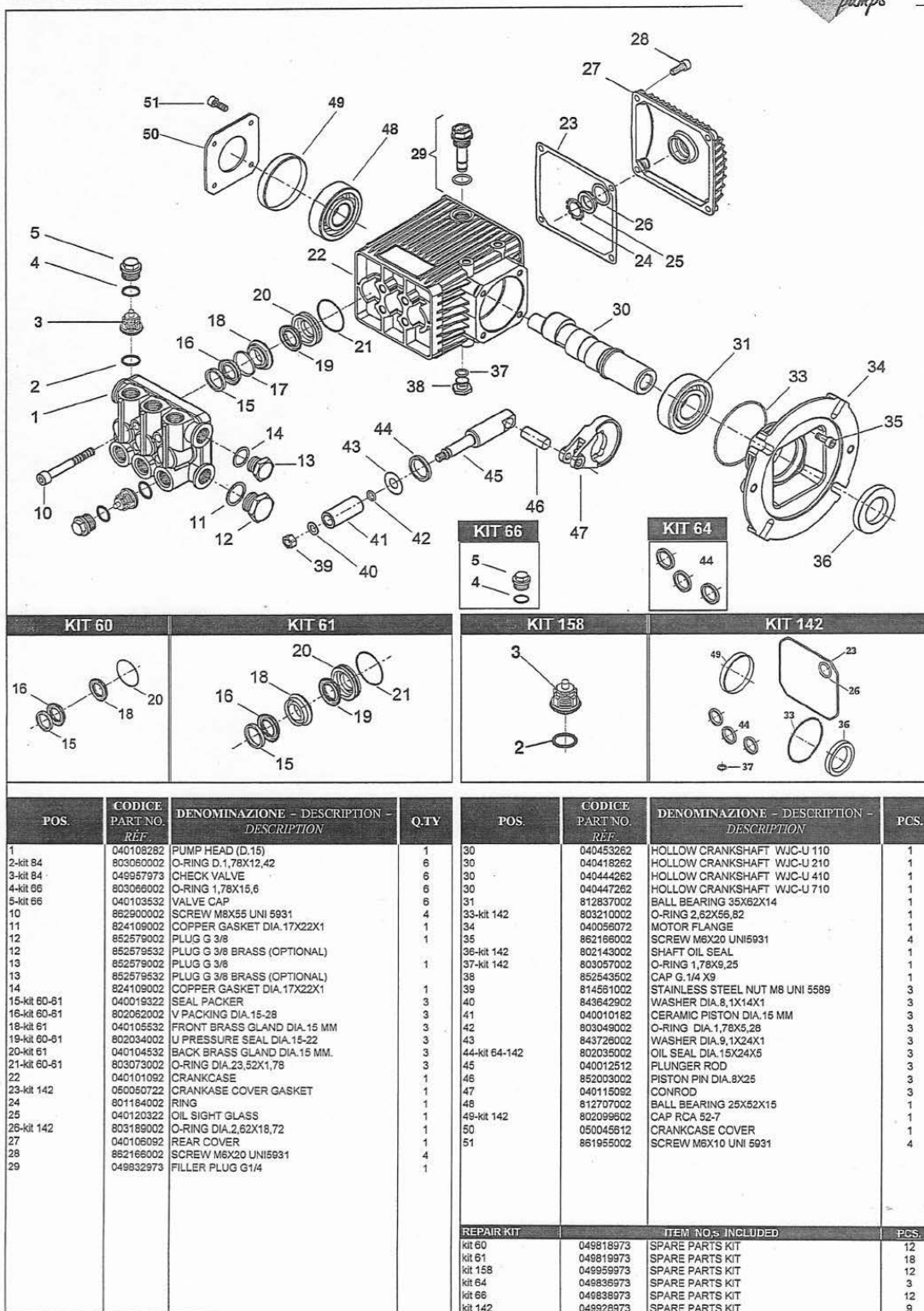
| Posizioni Item | Part Number & Description | Codice e Descrizione | Q.tà/Pompa Q.ty/Pump | HC165ARL | HC168R | HC170 | HC170RL | HC190 | HC190RL |
|-----------------------|--|--|-------------------------|----------|--------|-------|---------|-------|---------|
| 3- 5- 6 | 2608.08 Plunger "V" Seals 20 mm | 2608.08 Guarniz. pistone "V"Ø20 | 1 | ♦ | | ♦ | ♦ | ♦ | ♦ |
| 3- 52- 54- 56 | 2608.18 Plunger "U" Seals 20 mm | 2608.18 Guarniz. pistone "U"Ø20 | 1 | | ♦ | | | | |
| 2- 3- 4- 5- 6- 7 | 2627.01 Complete "V"seal Packing 20 mm | 2627.01 Pacco completo "V" Guarnizioni pistone Ø20 | 3 | ♦ | | ♦ | ♦ | ♦ | ♦ |
| 2-3-52-53-54-55 56 | 2627.03 Complete "U"seal Packing 20 mm | 2627.03 Pacco completo "U" Guarnizioni pistone Ø20 | 3 | | ♦ | | | | |
| 37-38-39-40-41 42 | 2627.02 Plunger 20 mm | 2627.02 Pistone Ø20 | 3 | ♦ | ♦ | ♦ | ♦ | ♦ | ♦ |
| 11- 12- 13 | 2600.02 Complete Valve | 2600.02 Valvola completa | 6 | ♦ | ♦ | ♦ | ♦ | ♦ | ♦ |
| 2 | 2600.03 Plunger oil Seals | 2600.03 Anelli tenuta olio Asta | 1 | ♦ | ♦ | ♦ | ♦ | ♦ | ♦ |

CLEANER. BETTER. SMARTER.

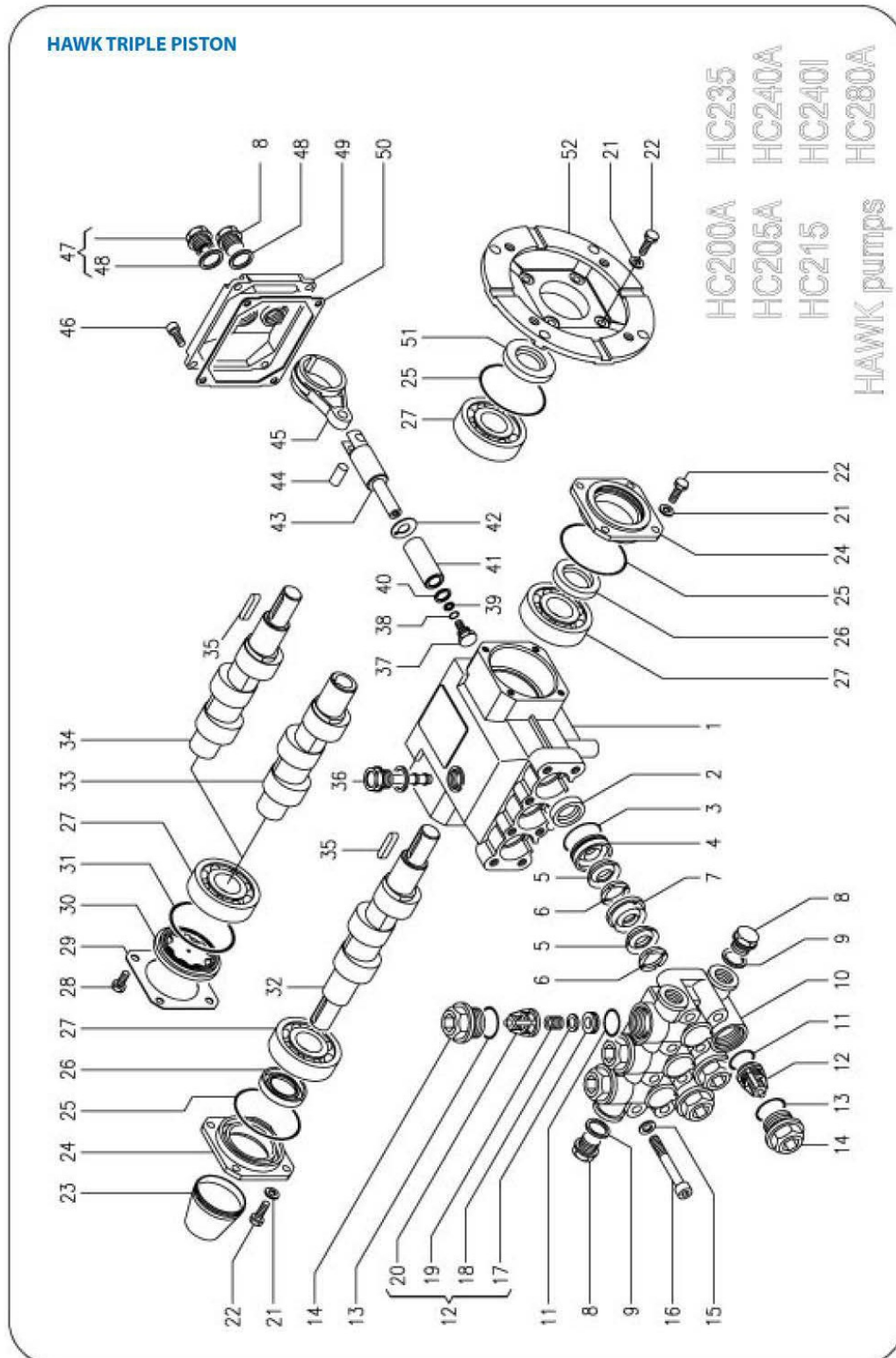
SERVICING YOUR PUMP CONT.

WJC-U 110 - 210 - 410 - 710

BERTOLINI
pumps



SERVICING YOUR PUMP CONT.

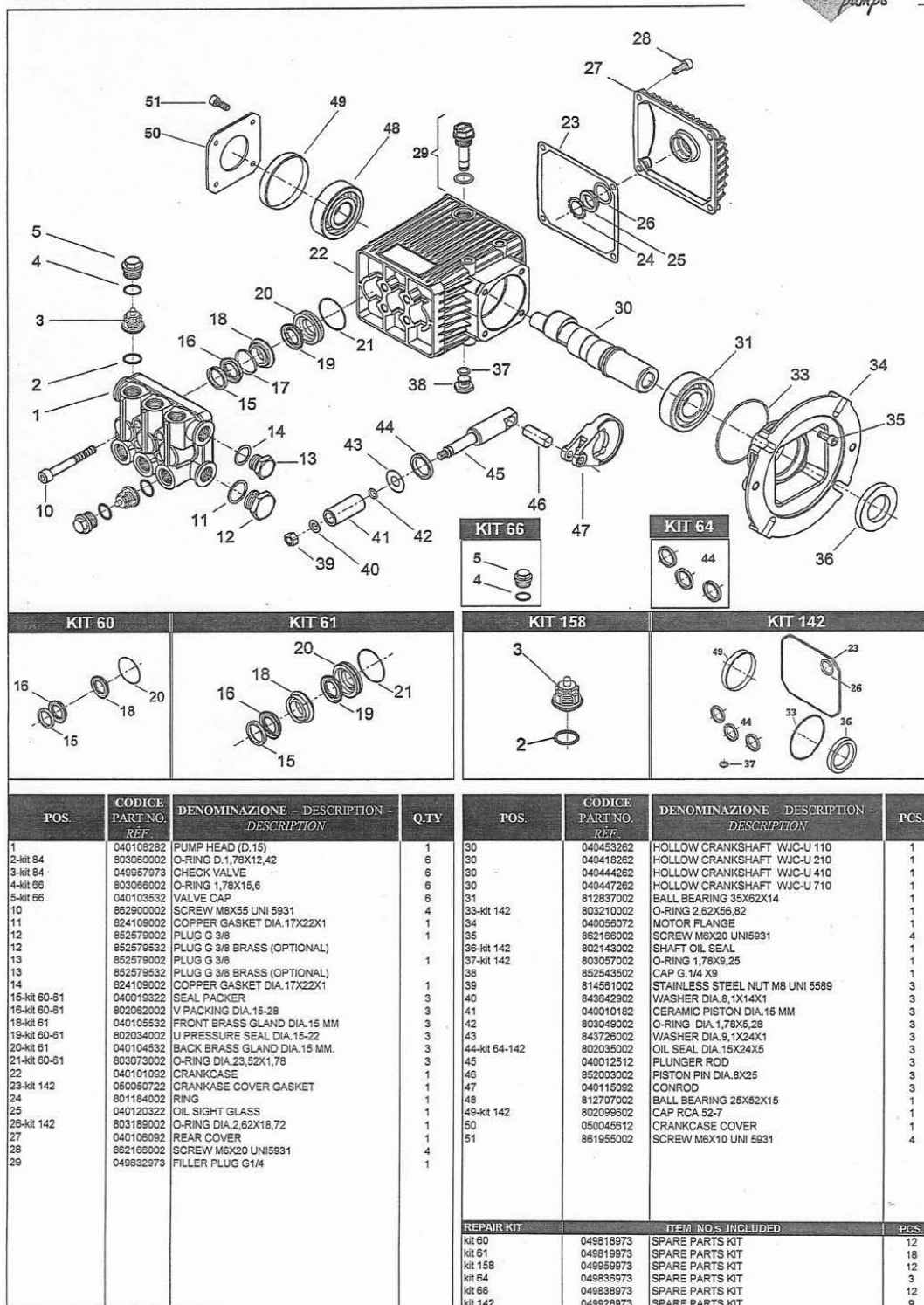


CLEANER. BETTER. SMARTER.

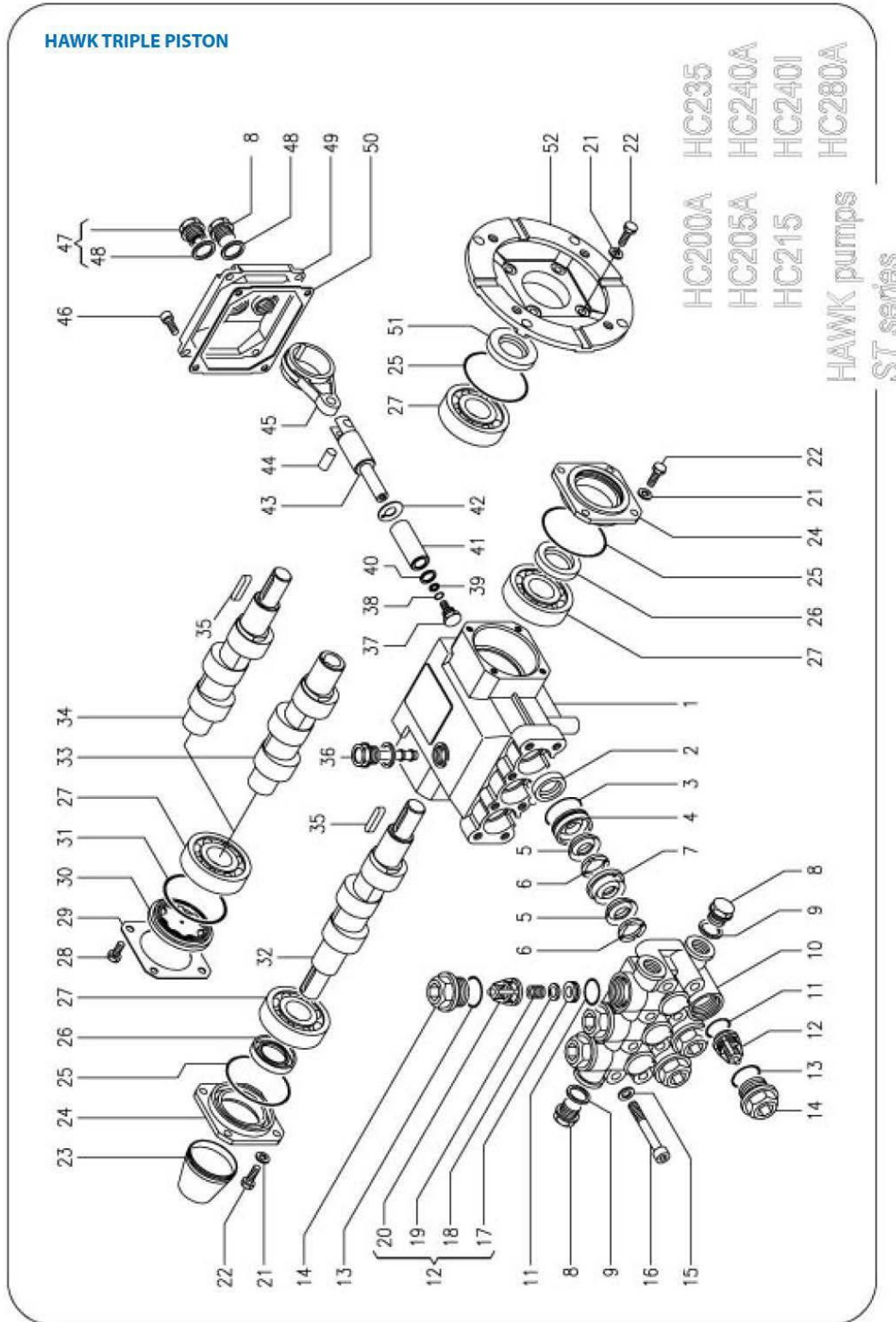
SERVICING YOUR PUMP CONT.

WJC-U 110 - 210 - 410 - 710

BERTOLINI
pumps



SERVICING YOUR PUMP CONT.



TROUBLE SHOOTING

Because all Steam-Vac equipment has been designed for maximum efficiency, the possibility of failure and consequent down-time is strictly limited. The following notes may help you in the unlikely event that you have trouble;

LACK OF VACUUM

- Check if the ball in the recovery filter hasn't been stuck in up position.
- Make sure the dump or waste valve at the front of the portable is fully closed.
- Make sure that the Booster port flap is down.
- Make sure your dome is seated properly.
- Make sure both vacuum motors are operating.
- Make sure heater switch is in off position.
- Check that the wand or upholstery tool is not blocked.

LACK OF PRESSURE

- Make sure the filter in the clean water tank is not blocked.
- Make sure there is enough water in the clean water tank to lift the float switch.
- Make sure the pressure adjust valve is closed and not bleeding.
- Jet's are too large in the wand or upholstery tool you are using.
- Look under machine to see that there are no leaks from the pump itself or hoses connected to it.

WASTE PUMP NOT WORKING

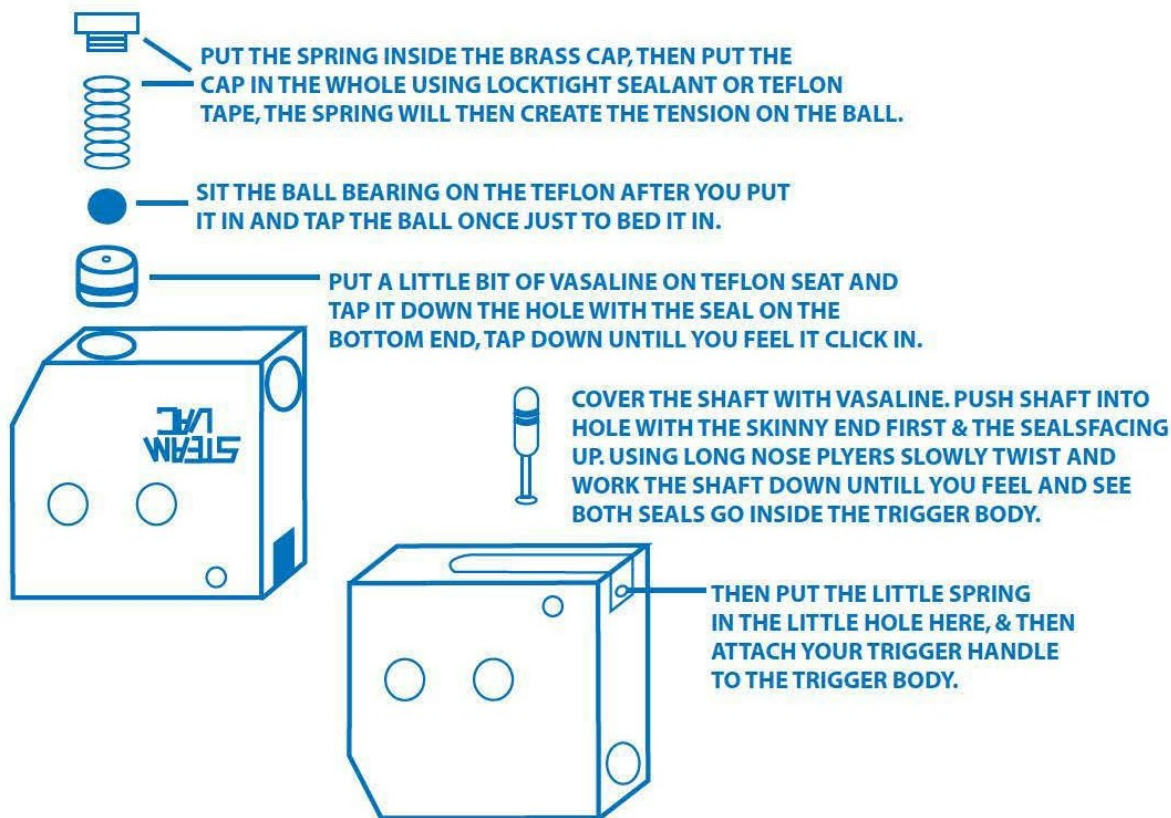
- Make sure the waste switch is on and the ball valve is open.
- You can take the pump out just like you do when cleaning the pump filter bag and remove the blue magnetic float switch on the side of the pump by levering it open with a flathead screwdriver and rinse out any muck. (make sure to put the float back in the right way up.)

PUMP MOTOR OVERLOAD

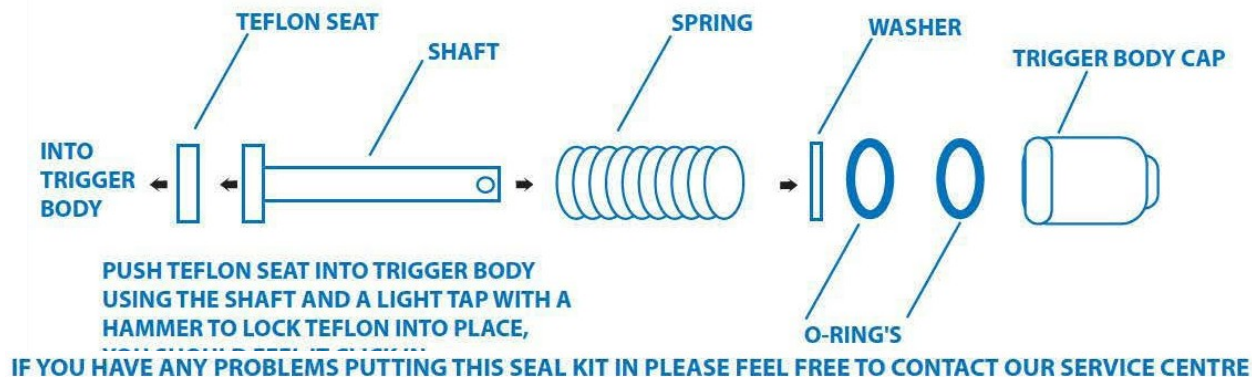
To prevent damage, the pump motor has a safety overload switch which is located on the switch panel.

- To reset simply press the reset switch once.
- It may be necessary to wait for the motor to cool down before the reset can be active.

REPLACING A STEAMVAC TRIGGER SEAL KIT



REPLACING A VAPOUR TECH SEAL KIT



Steammaster

CLEANER. BETTER. SMARTER.

ACCESSORIES BY STEAMVAC



THE GULPA WASTE MANAGEMENT SYSTEM

This is the ultimate waste system for commercial carpet cleaning and flood work. The advantage is in the design, the Gulpa is made out of a clear Perspex box which enables you the user to show your clients exactly what sort, and what volumes of dirt that is being sucked out of there carpets. The Gulpa is also a great marketing tool, imagine that you are working on a job with your Gulpa out the front of the property, all passers by and neighbours can see the dirt you are extracting with there own eyes and get a real insight into the service you provide.



It can be used externally as normal or internally whereby the submersible pump can be installed into a waste tank of a portable machine. This will then give your machine an auto waste pump feature, gone are the days of running to your portable machine to manually drain waste, the auto pump out will therefore cut wasted time down to a minimum and give you more freedom with your daily work



THE BOOSTER PACK

The "Booster" is an added vacuum air flow booster pack designed to work inline with a portable machine to create more vacuum suction for those jobs requiring more drying time or for you to use larger lengths of hose. The marine grade fibreglass houses two 1200 watt vacuum motors and connects to all Steam Vac portables via the booster port. Like the portable range the "Booster" has an hour meter so you can keep track of the vac motor usage.



THE "SIZZLER" INLINE HEATER - 1000 PSI

The "Sizzler" is a 1000 psi inline pressure water heater, it operates on 10 amp power and is ideal to work inline with a portable unit, for the cleaning of upholstery and other applications where heat can be lost through water solution lines. It is fitted with a stainless steel inner heater coil and an adjustable thermostat with a safety shut off.

Steammaster

CLEANER. BETTER. SMARTER.

ACCESSORIES BY STEAMVAC



THE VAPOUR-TECH UPHOLSTERY TOOL

"The Hand Tool From Heaven"

Awarded 1st prize in the category of "Best New Accessory" In the year of its release, now almost ten years later its still going strong as the best upholstery-cleaning tool on the market. Its design allows for ample amounts of water to skim across the surface of the fabric, while the continuous vacuum pressure draws the water away to prevent over wetting. This tool can be used on a variety of applications such as lounge suites, car interiors, curtains and stairs.



As with all other STEAMVAC equipment our Vapour Tech upholstery tool is 100% manufactured right here in Melbourne so if there is ever a need to service or replace a seal kit the parts are readily available and always in stock.



WANDS BY STEAMVAC

Fitted with the STEAMVAC trigger this light weight low profile stainless wand comes in sizes 12 inch 2 jets, 12 inch 4 jet and a 15 inch 4 jet. No more worn hose ends causing blockages, Steamvac wands are fitted with a stainless solution hose.



STAIR TOOL

Fitted with the STEAMVAC trigger this light weight stair tool is great for tight spaces and stairways that would be difficult to do with the normal wand.



PRE-SPRAY GUN

STEAMVAC has developed its own pre sprayer gun for the carpet cleaning industry. With its own specially designed chemical injector. This is a great tool and allows you to get chemical on the carpet without running it through your pump. We suggest a 8:1 water to chemical ratio.



HOSE REEL - FULL STAINLESS STEEL

We have developed a great hose reel called the space saver, maintenance free with its fully sealed bearings as apposed to the old grease nipple. Its design allows for vacuum hose, solution hose and garden hose. The advantage is that the solution reel and garden hose reel is situated just above where the wheel arch is in most vans, this creates much more room than most conventional reels.

STEAMVAC USER GUIDE

- * PRE VACUUM CARPET AND INSPECT FOR STAINS AND MARKS. (DO NOT USE PORTABLE TO VACUUM CARPETS)
- * PLUG POWER LEAD IN TO YOUR MACHINE AND INTO A WALL POWER POINT.
- * FILL SOLUTION TANK WITH WARM WATER AND TURN ON HEATER TO GET YOUR SOLUTION TO A GOOD OPERATING TEMPERATURE.
- * PRE SPRAY THE CARPET WITH CHEMICAL BY USING A PRE SPRAY GUN OR PUMP UP SPRAYER.
- * ATTACH VAC HOSE TO PVC PIPE ON PORTABLE DOME AND THE OTHER END TO YOUR WAND. ATTACH SOLUTION HOSE TO CONNECTION UNDERNEATH WAND AND TO CONNECTION ON FRONT OF MACHINE. AND SET UP AUTOMATIC WASTE AND FILL HOSES IF YOUR MACHINE IS AUTOMATIC.
- * TURN OFF HEATER SWITCH AND TURN ON VACS AND PUMP SWITCHES ON YOUR MACHINE. (FOR SAFETY PURPOSES MACHINE WILL NOT WORK IF HEATER IS ON EXCEPT ON HP MODELS)
- * PROCEED AND COMPLETE CLEANING.
- * TURN OFF ALL SWITCHES ON MACHINE & WALL POWER POINT AND DISCONNECT POWER CHORD FROM UNIT.
- * REMOVE ALL HOSES FROM PORTABLE.
- * WHEEL MACHINE OUTSIDE AND DISPOSE OF WATER BY LIFTING THE DUMP VALVE (IF MANUAL)
- * CLEAN ANY LINT OR DIRT FROM YOUR FILTER BASKET AND HOSE OUT WASTE TANK. ALSO CLEAN THE SMALL FILTER BUTTON FOUND ON THE INSIDE OF YOUR SOLUTION TANK AS THIS IS YOUR PUMP INLET.

RECOMMENDED OPERATING PRESSURE

- * FOR UPHOLSTERY CLEANING = MAXIMUM 300 PSI
- * FOR CARPET CLEANING = MAXIMUM 500 PSI
- * FOR TILE AND GROUT CLEANING = MAXIMUM 1200 PSI

12 YEAR CONDITIONAL WARRANTY

Steam Vac (Aust) Pty Ltd warrants the Fibreglass Body and Sub Frame against faulty workmanship or failure for a period of 12 years from date of purchase. Any defect must be notified to the Company in writing immediately and the equipment must not be used until such defect is rectified. The customer must wear all freight costs. This warranty shall not apply where the equipment has been abused or damaged by misuse or negligent handling and does not include cracking of gel coat, only structural defaults.

Steam Vac (Aust) Pty Ltd warrants all items supplied by it to be free from defects in material or workmanship. In the event of a defect being disclosed in any item within 1 year of receipt by the customer, the Company will, if satisfied on its examination that failure was due to defective material or workmanship, repair or replace the defective item, provided the purchaser gives the Company immediate written notice of such alleged defects. All accessories furnished by Steam Vac (Aust) Pty Ltd but manufactured by others, bears only that manufacturer's standard warranty. All defective items shall become the property of the Company when replaced by the Company. All freight costs must be worn by the customer.

Vacuum and Solution Hoses carry a 6 month warranty against faulty workmanship but kinks, cuts or damage caused by over heating of the solution hose shall be worn by the customer. This warranty shall not apply to any hose end connections. All freight costs must be worn by the customer.

CONDITIONS

1. No warranty on equipment or parts exposed to freezing temperatures, due to improper enclosed protection or improper heating.
2. No warranty on neglect of greasing or lubricating of pump.
3. No warranty when using harmful chemicals eg Acid rinse's ect.
4. No warranty on abuse or damages to cabinet or panels.
5. This warranty does not extend to any item which in the judgement of the Company shall have been repaired, altered, abused, neglected or used in any way so as to affect adversely its stability or reliability.
6. It is agreed that in the event of breach of any warranty, liability of the seller shall be limited to repairing or replacing the non conforming goods.
7. The foregoing warranty is in lieu of and excludes all other warranties and conditions expressed or implied whether under common law, statute or otherwise, and every form of liability for loss or damage, direct or consequential, or for any accident resulting from defective material, faulty workmanship or otherwise is expressly excluded.
8. Items excluded by the warranty shall be normal service items that will need to be replaced from time to time eg. vacuum motors and brushes, bearing, pump seals, etc.