

New Equipment Warranty

Limited Warranty

American Sniper warrants new equipment against defects in material and workmanship under normal use and service to the original purchaser. Any statutory implied warranties, including any warranty of merchantability or fitness for a particular purpose, are expressly limited to the duration of this written warranty. American Sniper will not be liable for any other damages, including but not limited to indirect or special consequential damages arising out of or in connection with the furnishing, performance, use or inability to use the machine. This remedy shall be the exclusive remedy of the purchaser. The warranty period is subject to the conditions stated below.

Lifetime on Molded Body Parts, 2-Years on Vacuum Motors, 1-Year on Pump and all Electrical Parts, 90-Days on Accessories

American Sniper warrants the roto-molded body to be free from defects in material and workmanship, under normal use and service for a lifetime. American Sniper warrants the motors to be free from defects in material and workmanship, under normal use and service for two (2) years from the original date of sale. American Sniper warrants the pump and all electrical components to be free from defects in material and workmanship, under normal use and service for one (1) year. Parts replaced or repaired under this warranty are warranted for the remainder of the original warranty period. Service labor charges are covered for one (1) year from the date of purchase, when performed by a American Sniper-authorized service provider.

All warranties exclude shipping expenses and all clients are responsible for all shipping charges needed to complete warranty. Labor is only provided by authorized service centers. If an authorized service center is not near you, it is the purchasers responsibility to take your machine to an authorized service center.

Normal wear items such as capacitors, cords, finishes or switches will be warranted for manufacturing defects for ninety (90) days from the purchase date.

All warranties of motors and associated components will be voided: if the machine is serviced by anyone other than an authorized service provider; if the machine is mechanically modified; if the machine is operated when not operating properly; or if the machine is misused or abused all warranties are voided.

The warranty starts on the purchase date by the original purchaser from American Sniper subject to proof of purchase. The Machine Registration Card must be completed and returned immediately at the time of purchase. If proof of purchase cannot be identified, the warranty start date is ninety (90) days after the inventory stocking date at the distributor's warehouse.



6 Reservoir Avenue, Greenacre SYDNEY NSW 2190 Australia
Phone: 1300 855 677 | Fax: 02 9796 3395
www.steamaster.com.au

Make a copy of this card for future reference.

© 2015 All Rights Reserved American Sniper

SAFETY, OPERATION AND MAINTENANCE MANUAL WITH PARTS LIST

Please read before use!

500 PSI PUMP, DUAL 3-STAGE MOTOR

Steamaster
CLEANER. BETTER. SMARTER.



REGISTER
YOUR
MACHINE!

230 VOLT



IMPORTANT INFORMATION AND SAFETY INSTRUCTIONS

Register your Machine – Return your Warranty Registration Card.

Serial No: _____

12-GALLON CARPET EXTRACTOR WITH HEAT

Reliable Power

Innovative Design

Safe & Easy to Use

Powerful Extracting

Easy Transport

Patented Features

New Equipment Warranty

Lifetime warranty on roto-molded body, 2-years on vacuum motors, 1-year on 500 psi pump and all electrical parts, 90-days on accessories and tools.

Warranty Policy

All equipment is inspected and tested before shipping from the manufacturer. All parts are warranted to be new and free from defects in workmanship and material, under normal use to the original retail purchaser. This warranty limits manufacturer's liability for defects in workmanship or materials for replacement of defective parts only. The manufacturer accepts no liability for incidental or consequential damages arisen from the use of any equipment, defective or not. This warranty is in lieu of all expressed or implied warranties and is extended only to the original retail purchaser. Manufacturer sales and service representatives are not authorized to waive or alter the terms of this warranty, or to increase the obligations of the manufacturer under the warranty. Parts replaced or repaired under this warranty are warranted for the remainder of the original warranty period.

All warranties exclude shipping expenses and all clients are responsible for all shipping needed to complete warranty. Labor is only provided by authorized service centers. If an authorized service center is not near you, it is the purchasers responsibility to take your machine to an authorized service center.

The manufacturer covers up to one (1) year (365 days) of service labor at the manufacturer's calculated hourly labor rate/repair time when performed by a manufacturer's authorized service provider. Ultimately, labor reimbursement costs are at the discretion of the manufacturer. At no time is the manufacturer responsible for travel time to complete on-call repairs. After one (1) year, the original retail purchaser is responsible for all labor costs with no manufacturer reimbursement.

The original purchaser must contact the manufacturer to follow correct RMA/warranty procedures. They must have a copy of the RMA Sheet enclosed in the box with the returned item. No returns shall be authorized unless the proper RMA procedures are followed. It is the responsibility of the distributor to repair the client's equipment as soon as possible.

The manufacturer charges a 25% restocking fee for any items that are being returned to stock. Items must be new, unused, free of damage and are only good for up to 30 days. After 30 days, the manufacturer does not accept the return of any item(s) for a store credit.

Authorized warranty replacement parts need to come directly from the manufacturer. Any use of any other parts will void warranty. American Sniper does not reimburse for parts used by client that were not supplied directly for the machine under warranty.

The customer must contact the manufacturer prior to working on or changing out of any parts, etc. The manufacturer must issue an RMA Sheet containing approved labor time and replacement parts. Do not send parts or equipment back to the manufacturer without an RMA Number and approval. No labor will be paid for, nor parts cost paid for or reimbursed, that have not previously been approved by the manufacturer. All warranty work must be approved and authorized to qualify, and appropriate warranty procedures must be followed.

The warranty starts on the purchase date by the original purchaser from an authorized American Sniper distributor, subject to proof of purchase. The Machine Registration Form must be completed and sent to the original manufacturer at the time of purchase. If proof of purchase cannot be identified, the warranty start date is ninety (90) days after the date of sale to an authorized American Sniper distributor.



Warranty Registration

Please take a moment to register your machine online or fill out the information below and mail back to American Sniper immediately.

The warranty starts on the purchase date by the original purchaser subject to proof of purchase. This Machine Registration Card must be completed and returned immediately at the time of purchase. If proof of purchase cannot be identified, the warranty start date is ninety (90) days after the inventory stocking date at the distributor's warehouse.

Machine Model _____ **Purchase Date** _____

Motor Type _____ **Serial No.** _____

Place of Purchase _____

Shipped To _____

Your Name _____ **Phone** _____

Email _____ **Fax** _____

Address Line 1 _____

Address Line 2 _____

City _____ **State** _____ **Zip** _____

Comments:

Mail to:

6 Reservoir Avenue, Greenacre SYDNEY NSW 2190 Australia

**See reverse side for warranty information.
Make a copy of this card for future reference.**

© 2015 All Rights Reserved American Sniper

12-GALLON CARPET EXTRACTOR

By American Sniper

Please fill out the following information:

Model No: _____

Serial No: _____

Distributor Name: _____

Distributor Phone No: _____

Date of Purchase: _____



American Sniper

6 Reservoir Avenue, Greenacre SYDNEY NSW 2190 Australia

Phone: 1300 855 677 | Fax: 02 9796 3395

www.steamaster.com.au

Returned Material Authorization (RMA) Procedure

Original purchaser must contact the manufacturer to follow correct RMA/warranty procedures. Must include a copy of RMA Sheet enclosed in the box with returned item. No returns shall be authorized unless the proper RMA procedures are followed. It is the responsibility of the distributor to repair the customer's equipment as soon as possible. If the distributor does not have the facilities to repair the equipment, it may be shipped or taken to an authorized service center for repair.

Customer must contact the manufacturer prior to working on or changing out any parts, etc. Manufacturer must issue an RMA Sheet containing approved labor time and replacement parts. Do not send parts or equipment back to manufacturer without an RMA Number and approval. No labor will be paid for, nor part costs paid for or reimbursed that have not been previously approved by manufacturer. All warranty work must be approved and authorized to qualify and appropriate warranty procedures must be followed.

1.0 Safety Instructions

READ THIS MANUAL BEFORE USING YOUR CARPET EXTRACTOR. KNOW THE PROPER OPERATION, CORRECT APPLICATIONS AND THE LIMITATIONS OF THIS EQUIPMENT **BEFORE** USE.

Reduce the Risk of Fire, Electric Shock or Injury:

- Use only as described in this manual. Use only the attachments recommended by the manufacturer.
- Test all outlets with an outlet tester before plugging machine into any outlet. Plug cord into the nearest grounded outlet.
- DO NOT unplug by pulling on the cord, grasp the plug. DO NOT pull unit by the cord.
- Keep cord away from heated surfaces.
- Never attempt adjustments or repairs while the machine is plugged in.
- DO NOT use if cord or plug are damaged.
- DO NOT use outdoors, in standing water on wet surfaces.
- Pay close attention when using machine near children.
- DO NOT pick up flammable or combustible materials or use machine where they may be present.
- DO NOT leave machine outdoors, in extreme heat or cold. Harsh weather elements will damage components and void warranty.
- Lift using only the appropriate handles.
- Always wear the appropriate clothing and safety equipment when operating the machine.
- Keep all body parts, hair and loose clothing away from openings and moving parts.
- Use extra care when cleaning stairs. Never move the machine up or down stairs with fluid in the machine.
- Use common sense to protect yourself and others from injury when using the machine.

2.0 Set-Up / Prepare Unit for Use

DO NOT USE ON WET SURFACES. DO NOT EXPOSE TO RAIN. STORE INDOORS.

- All carpet extractors, no matter what the time of year, are shipped with antifreeze in the solution lines. Prior to first use, fill the solution tank with one quart of warm water. Attach the hose and using a hand tool or wand, flush out the system by spraying the one quart of water through the pump.
- Attach the vacuum hose and the brass quick disconnect.
- Fill the solution tank with warm water (less than 100 degrees Fahrenheit). Fill to approximately 4 inches from the top. Pre-spray and agitate the surface with detergent made for floor cleaning or upholstery. Use only warm water to extract the pre-spray from the surface.
- Be sure to replace any filters back into the machine prior to use.
- Do not use citric acid, butyl glycol or harsh degreasers inside the machine.

2.1 Electrical

Plug cord(s) into 10 AMP grounded wall outlet(s). 10 AMP circuits are normally found in kitchens and bathrooms. Never remove ground prong from the plug. If a circuit breaker trips during operation, turn machine off, reset the breaker and move the electrical cord to a different outlet and resume operation.

2.2 Vacuum System

Automatic Vacuum Shut-Off: The float assembly shut-off, located in the recovery tank on the vacuum stand pipe, prevents the waste tank from overflowing into the stand pipe and damaging the vacuum motor(s). The float assembly will cut-off vacuum to the waste tank. The motor(s) will also reach a fast, high-pitched sound alerting you when the recovery tank is about to over flow. When this happens, immediately turn off the vacuum motor(s) and empty the waste tank. If the operator continues to use machine after the tank is full, it will void the Warranty.

The float assembly has a filter to prevent lint and debris from entering the stand pipe. Refer to the “Maintenance” section for removal and proper cleaning.

Recovery Tank: the vacuum system requires the use of an external filter. The clear view in-line filter is included with the machine and must be used on every job.

It is also necessary to use a defoamer to eliminate foam build-up in the recovery tank which could lead to foam/moisture entering the vacuums and contributing to early failure of the vacuum motors.

If moisture does enter the vacuum motors, contact an authorized service center. To prevent moisture from damaging the vacuum motors during storage, empty the recovery tank and store with the lid open.

9.0 Machine Parts List Continued

Item No.	Item Description	Qty.	Drawing No.
10-0807	Wheels for Extractor	2	48
10-0834	Pump Flat Washer	18	49
10-0835-N	Nut for Pump Bolt on Extractor	8	50
10-0808	Caster for Extractor	2	51
10-0816	Caster Bolt 1/4-20 x 1/2 Hex Bolt	12	52
10-0843-COM	1/2" x 54" Clear Hose for Extractor Pump		
	Includes Fittings and Filter	1	53
80-0040-C	46" of Blue 3000 psi Hose for Extractor		
	Complete with Fittings and Clamps	1	54
80-0044-S	30" Black Hose with Fittings and Clamps	1	55
10-0835-N	Nut for Pump Bolt on Extractor	4	56
Hose Fitting	Part of 80-0044-S		57
Hose Fitting	Part of 80-0040-C		58
80-0015	500 psi Pump Mount Plate	1	59
10-0833	Motor Manifold Bolts for Extractor	4	60
80-0044-L	67" Black Hose with Fittings and Clamps	1	61
Hose Fitting	Part of 80-0044-L		62
Hose Fitting	Part of 80-0044-S		63
10-0881	1/4" MNPT x 3/8" JIC 90 Degree -		
	Part of 80-0044-S	1	64
80-0016	500 psi Pump	1	65
10-0835-B	Pump Bolt for Extractor	4	66
80-0036	Locking Plate	1	67
10-0832	S/R Strap Bolts	4	68
10-0040	3000 psi Blue Hose - Part of 80-0040-C	6	69
80-0026	3/8" Barb x 1.4" MPT 90 Degree -		
	Part of 80-0040-C	1	70
80-0017	Bulk Head fitting for Extractor	3	71
10-0379	8-32 x 3/8 Screw	8	72
10-0868	1/4" Female QD for Extractor	1	74
10-0831	S/R Bracket for Extractor	2	75
80-0035	Bracket	1	Not Pictured
80-0037	RFI Filter	1	Not Pictured
80-0005-C	10 amp Circuit Breaker	1	Not Pictured

9.0 Machine Parts List

Item No.	Item Description	Qty.	Drawing No.
SN-12-ST-REDGRAN	12-Gallon Solution Tank – Red Granite	1	1
Part of Solution Tank	Insert Molded in to Solution Tank		2
80-0017	Bulkhead Fitting for Extractor	1	3
	Part of 80-0017 Bulk Head Fitting		4
10-0846	1/4" MPT Hex Nipple for Extractor	1	5
10-0845	1/8" Strainer for Extractor	2	6
80-0080-UN	500 psi Regulator/Unloader	1	7
80-0026	3/8 Barb x 1/4 MPT 90 Degree	3	8
10-0826	3/4" Hose Clamp for Extractor	5	9
80-0001	Extractor Exhaust Hose	0.4	10
80-0003-A	1-1/2" Black Lined Gray Hose	2	11
10-0806	1-1/2" Grey Hose Barb Fitting for Extractor	1	12
Bracket	Part of 80-0016 Pump	1	13
80-0006	45 Degree Street Elbow	1	14
80-0011	90 Degree Street Elbow	1	15
10-0803	Splash-proof Switch for Extractor	3	16
80-0059	500 psi Gauge	1	17
80-0013	500 psi Switch Plate	1	18
Connector	Part of 80-0059 Gauge		19
SN-12-L-REDGRAN	12-Gallon Lid – Red Granite	1	20
80-0010	1/4" Brass Tee	2	21
80-0011-2	90 Degree Street Elbow	1	22
80-0004	1/4" x 4" Brass Nipple	1	23
10-0852	1/4" 90 Degree Brass Elbow	3	24
10-0804-A	Hatch Cover Gasket for Extractor	1	25
10-0804	Hatch Cover for Extractor	1	26
80-0012	Float Assembly for Extractor	1	27
10-0416-A	1-1/2" Black ABS Stand Pipe	1.3	28
80-0008	1.5 PVC Female Adapter	1	29
SN-12-RT-BLKGRAN	12-Gallon Recovery Tank – Black Granite	1	30
10-0805	Dump Valve for Extractor	1	31
10-0849	1-1/2" ABS Fitting	1	32
10-0155	Hose Cuff Straight	1	33
10-0848-B	1-1/2" 90 Degree ABS Street Elbow	3	34
10-0833	Motor Manifold Bolts for Extractor	6	35
80-0116	Spacer for Motor Screw	6	36
10-0810-A	230 Volt 3-Stage Extractor Motor	2	37
10-0838-A	Complete Pigtail for Extractor	1	38
10-0850	Strain Relief for Pigtail - Part of 10-0838-A		39
10-0851	Strain Relief Nut for Pigtail - Part of 10-0838-A		39
10-0822	Exhaust Grate for Extractor	3	40
10-1030-S3	3-Stage Extractor Motor Gasket	2	41
SN-12-MFLD	Extractor Motor Manifold	2	42
10-0830	Hinge Keeper for Extractor	2	43
10-0821	Extractor Hinge	2	44
10-0820	End Cap for Rod on Extractor	4	45
SN-12-MB-BLKGRAN	12-Gallon Motor Base – Black Granite	1	46
10-0836	19" Axle for Extractor	1	47
10-0807	Wheels for Extractor	2	48
10-0834	Pump Flat Washer	18	49
10-0835-N	Nut for Pump Bolt on Extractor	8	50
10-0808	Caster for Extractor	2	51
10-0816	Caster Bolt 1/4-20 x 1/2 Hex Bolt	12	52
10-0843-COM	1/2" x 54" Clear Hose for Extractor Pump		
	Includes Fittings and Filter	1	53

3.0 Grounding Instructions

DANGER: IMPROPER GROUNDING METHOD CAN RESULT IN A RISK OF ELECTRIC SHOCK.

Electrical equipment must be grounded. If the machine should malfunction or breakdown, grounding provides a path of least resistance for electrical current to reduce the risk of electric shock. The plug must be inserted into an appropriate outlet that is properly installed and grounded in accordance with all local codes and ordinances.

If repair or replacement of the cord or plug is necessary, DO NOT connect the grounded wire to a flat bed terminal. The grounding wire is the wire with insulation and an outer green surface, with or without yellow stripes.

Grounding Method

This equipment is designed to run on 230V/50 HZ electrical power. Equipment includes a grounded plug. A 10 amp circuit is required to operate machine. 10 amp circuits are normally found in kitchens and bathrooms. If a circuit breaker trips during operation, reset the breaker and move the electrical cord to a different outlet to resume operation.

WARNING:

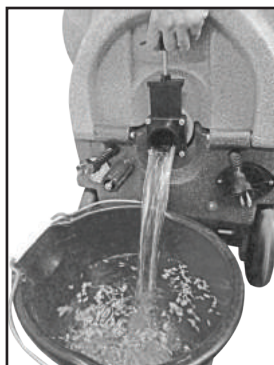
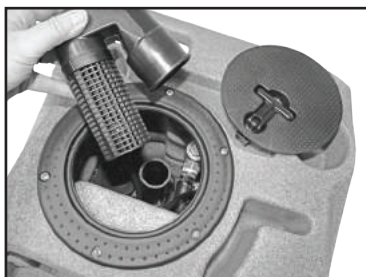
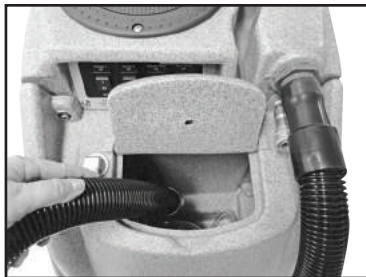
Improper connection of the equipment grounding conductor can result in a risk of electric shock. Check with a qualified electrician or service person if you are in doubt as to whether the outlet is properly grounded. DO NOT modify the plug provided with the equipment. If the plug will not fit into the outlet, have a proper outlet installed by a qualified electrician.

This machine is equipped with an Australian 3-prong plug.

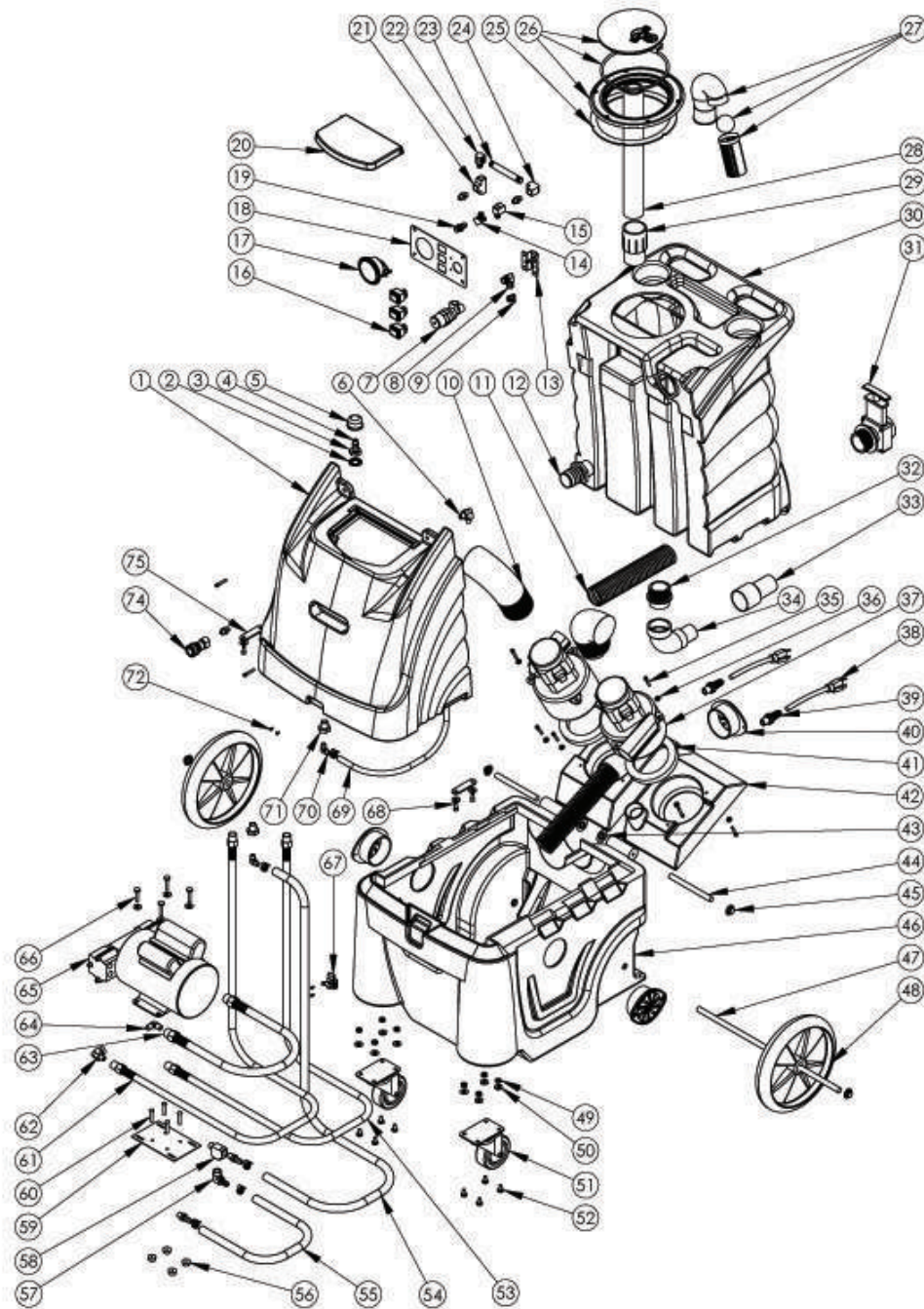


4.0 Shutdown Procedures

- When finished cleaning, turn OFF all switches.
- Disconnect the solution hose and vacuum hose from the cleaning tool. Pull the valve trigger to release pressure from the hose before disconnecting the solution hose from the cleaning tool.
- Disconnect the clear view in-line filter from the vacuum hoses and clean the filter as needed.
- Disconnect the vacuum hose and solution hose from the machine.
- If water remains in the solution tank, use the short vacuum hose and vacuum the excess water from the tank (image 1).
- Disconnect the power cords from the outlets and from the machine.
- Remove the float assembly from the recovery tank and clean filter as needed. Replace float assembly and tank lid (image 2).
- Drain any remaining water from the recovery tank and dispose of in a sanitary drain. DO NOT use the same bucket to drain the tank that you used to fill the tank (image 3).
- Roll up all hoses and tools. Collect and store extractor, all tools and accessories.



8.0 Machine Schematic Drawing



6.0 Storage and Freeze Protection Continued

Recommended Procedure for Storage Continued

- Attach and wands and hand tools that will also be stored with the Carpet Extractor. Open the valve for 30 seconds, directing the spray to the solution tank. Disconnect the hose and with the valve open and the jets pointing down, depress the dimple on the male QD. This will drain the solution out of the tool. Drain thoroughly before storing.
- Turn off the pump and disconnect all hoses and tools. Vacuum out the solution tank and thoroughly drain the recovery tank and vacuum hose.

To return to service, flush the pressure system by repeating the above steps, using fresh water in place of antifreeze.

7.0 Trouble Shooting Guide

Never operate this Carpet Extractor when the equipment is not performing as expected or when any part is visibly damaged. When repair is needed, take the equipment to an authorized service center.

System	Problem	Possible Cause	Remedy
Vacuum System	No Vacuum / Weak Vacuum	1. Vacuum Tank Full 2. Float Assembly Tank Screen Dirty 3. Float Ball Stuck 4. Damaged or Loose Vacuum Hose 5. Dump Valve Open 6. Access Lid not Sealed 7. Vacuum Hose Clogged 8. Air Intake Grid Clogged 9. Leak in Recovery Tank 10. Water Coming out of Vacuum Exhaust	1. Empty Tank 2. Clean the Screen with Water 3. Tap Float to Unstick then Clean 4. Attach or Replace 5. Close Valve 6. Replace Gasket 7. Clear Debris 8. Clean 9. Clean and Dry Area, Patch with Silicone 10. Use a Low Foaming Detergent
	Unit will not Turn On	1. Extension Cord not Plugged In 2. Switch not in the "On" Position 3. Building Circuit Overloaded 4. Wiring Connections Loose	1. Check if Machine and Cord are Plugged In 2. Check Switches, Replace if Necessary 3. Reset Circuit 4. Unplug Machine and Check for Loose Wires
Electrical System	Burning Smell	1. Vacuum Motor Hung Up 2. Pump Motor Hung Up	1. Replace Vacuum Motor 2. Replace Pump
	Pump is not Running Properly	1. No Power to the Pump 2. Jets on Wand are Clogged 3. In-Line Water Filter is Clogged 4. Debris in Solution Tank Covering Inlet 5. Kinked or Loose Hose 6. Pump Failed 7. Quick Disconnects are not Completely Locked Together 8. Heater is Clogged with Deposits 9. Pump is Pulsating 10. Auto Prime Valve is Open	1. Check the Electrical System 2. Clean Jet Filters 3. Clean In-Line Filter 4. Clear Debris 5. Check and Replace Hoses if Necessary 6. Replace Pump 7. Snap Quick Disconnects Together 8. Flush Heater with System Maintainer or Replace if Necessary 9. Check for Clogged Jets and Clean 10. Close Valve
Pump System			

5.0 Maintenance

Regular maintenance is required to keep your Carpet Extractor in proper working condition. Failure to properly maintain your machine could void warranty. Thoroughly clean all equipment and accessories after each use:

- Rinse the solution and recover tanks with clean water.
- Flush the pump system with clean water, including all hoses and wand(s).
- Do not allow water to remain in the tanks after use.
- Lubricate all quick disconnects with WD-40 or similar lubricant.
- Clean vacuum float assembly screen.

WARNING: Disconnect electrical power cord before performing any service or maintenance inside the machine base or before testing or repairing switches or power cords. Failure to do so may result in severe personal injury or death.

Operation	Interval
Clean Vacuum Assembly Screen	Daily- After Each Job
Rinse Out Recovery Tank	Daily
Flush Solution Tank and Pump	Daily
Clean Pump-Inlet Filter	Weekly - As Needed

5.1 Clean Fresh Water Tank Filter

The fresh water tank filter is located at the bottom of the solution tank. Unscrew the filter counterclockwise and rinse with fresh water. If necessary, use a tooth brush to remove detergent build-up. Note, a heavy build-up is a warning sign that the solution system should be flushed. See the "Flush Chemical System" section.

5.2 Clean Vacuum Float Assembly Screen

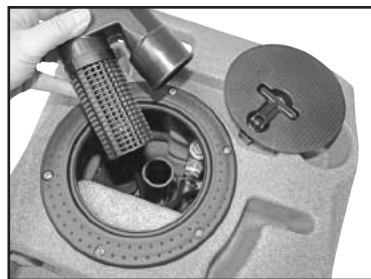
Inside the recovery tank, on top of the stand pipe, is the vacuum float assembly. It functions to prevent debris and water from being sucked into the vacuum motors. Operating the Carpet Extractor without the float assembly or with a poorly maintained assembly, will greatly decrease the life of the vacuum motors and will void the warranty.

If debris builds up on this filter, it will reduce the vacuum air flow and may cause a significant decrease in the rate of water recovery. If debris prevents the float ball from moving or seating inside the assembly, it may not stop the airflow when the tank fills with water and the water will be sucked in the vacuums and blow out the exhaust.

To clean, twist off the float assembly from the stand pipe and clean the screen. Pull fibers and lint off and rinse with clean water. Push the assembly back onto the stand pipe and replace the recovery tank lid.

5.2 Clean Vacuum Float Assembly Screen Continued

This screen should be cleaned frequently if the Carpet Extractor is being operated in an environment which has an abnormal build-up of lint and debris, such as cleaning newly installed carpet. Loss of vacuum is most normally associated with lint build-up in this filter at the top of the vacuum stand pipe.

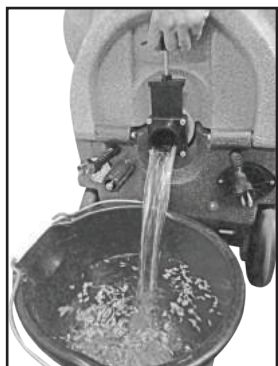
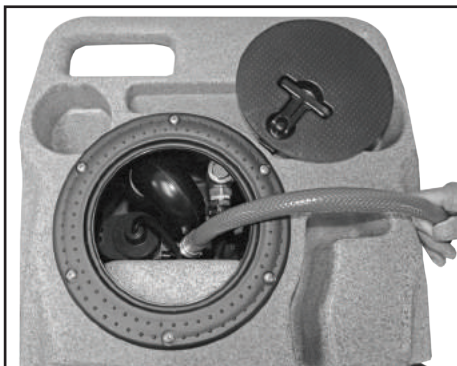


Vacuum Float Assembly

5.3 Rinse Out Recovery Tank

Build-up of fine silt and debris can damage the auto-dump pump and dump valve. Clean out the recovery tank on a regular basis to extend the life of these components as well as keep the tank and machine smelling better.

To rinse out recovery tank, remove the recovery tank lid and open the dump valve. Place a bucket under the dump valve. Use a hose to rinse the dirt and debris out of the recovery tank. Close the dump valve and spray the tank with deodorizer or disinfectant. Proceed to waste pump cleaning and replace the recovery tank lid. Dispose of dirty water and debris.



5.4 Clean Pump Inlet Filter

CAUTION: before proceeding with this procedure, make sure both the power cords are disconnected.

- To examine the filter, open the solution tank lid on the front of the machine. The filter is in the bottom of the solution tank.
- Grasp the filter cap and unscrew the filter from the brass nipple by turning counter-clockwise. Clean or replace the filter as needed.
- Tilt the tanks back onto the base and secure the plate.

5.4 Clean Pump Inlet Filter Continued



**1/4" Acorn Strainer
Part No. 10-0845**

5.5 WD-40 Vacuum Motors

Should moisture ever enter the vacuum motors, completely drain the recovery tank, open the recovery tank lid, remove the vacuum float assembly, turn on both vacuum motors and spray a five (5) second burst of WD-40 into the standpipe. Continue to run the vacuum motors for at least three (3) minutes.

To prevent moisture from damaging the vacuum motors during storage, empty the recovery tank and store with the lid open.

6.0 Storage and Freeze Protection

You must winterize your Carpet Extractor to protect the pump system from freezing and also damage being caused to fittings and valves. Damage due to freezing is not covered under the Warranty. Store your extractor in temperatures over 40 degrees Fahrenheit. If you plan on storing your extractor in freezing conditions or for a long period of time, the following procedure should help prevent your Carpet Extractor from freezing and prevent pump and seals from drying out.

Recommended Procedure for Storage

- In a separate container, mix 1/2-gallon of water with 1/2-gallon of RV Water System Antifreeze. Mix well and pour into the solution tank.
- Connect the pressure hose to the female quick disconnect (QD) on the front of the machine. Insert an open-ended male QD into the female QD on the end of the pressure hose.
- When primed, turn down the pressure to 100 PSI.
- Disconnect the open-ended QD and connect the solution hose to the male QD at the auto-fill/chemical feed connection. **CAUTION:** applying high pressure (over 100 PSI) to the chemical feed system will damage the mechanism.